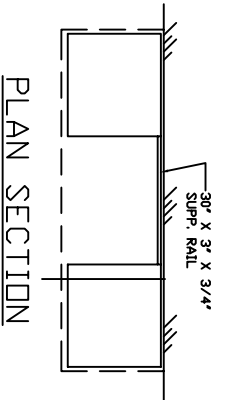
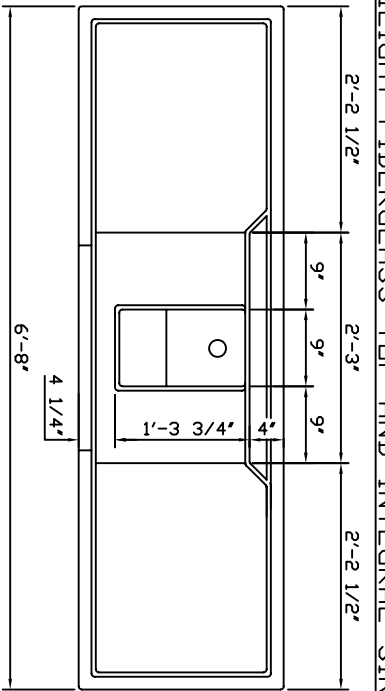
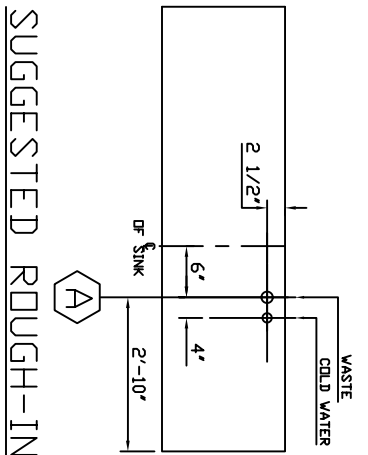


TWILIGHT FIBERGLASS TOP AND INTEGRAL SINK

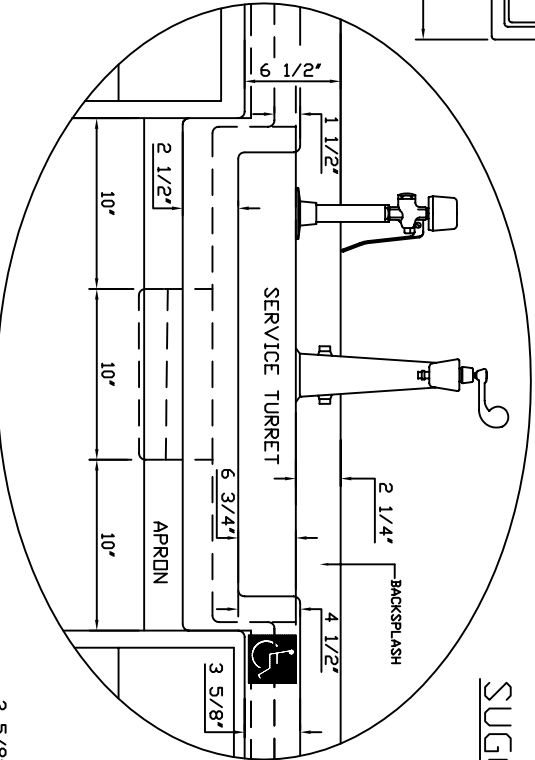


PLAN SECTION

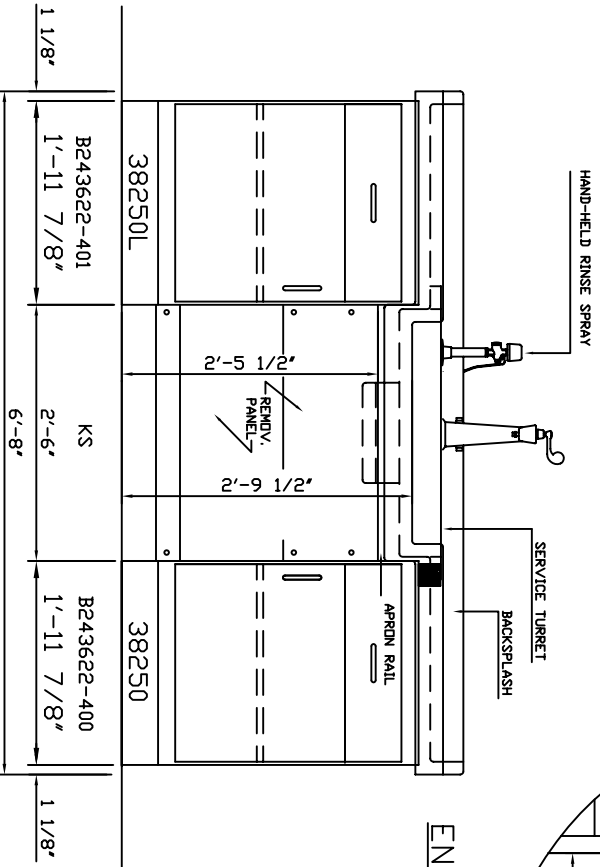


SUGGESTED ROUGH-IN

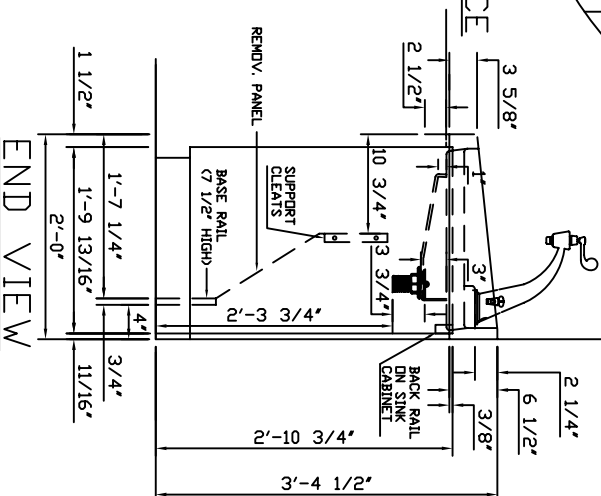
- SERVICES:
 (1) 80022WB CW WITH
 WRIST BLADE.
 (1) G-5020 HAND HELD
 RINSE SPRAY



ENLARGED VIEW AT KNEE SPACE



ELEVATION



END VIEW

JOB NAME

ADA RINSE AWAY STATION 27820



DRAWN BY
 DTM
 DATE
 07/15/02

SCALE
 1"=1'-0"

REVISIONS

P.O.#

SHEET
 07